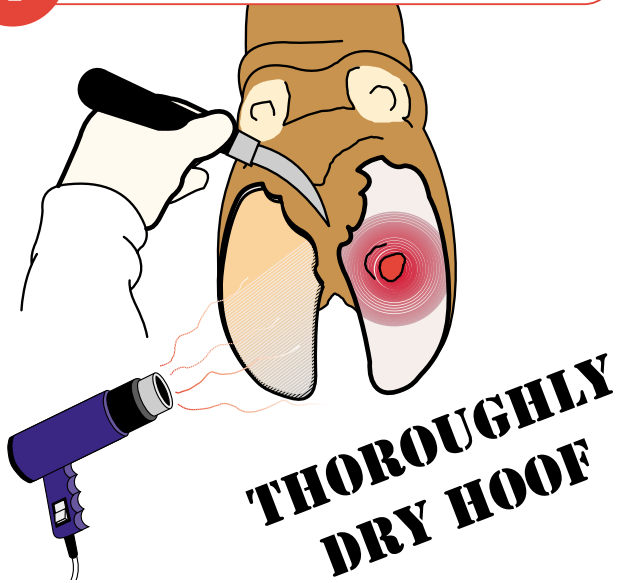


# STEP BY STEP INSTRUCTIONS

1

Prepare hoof, clean and thoroughly dry.



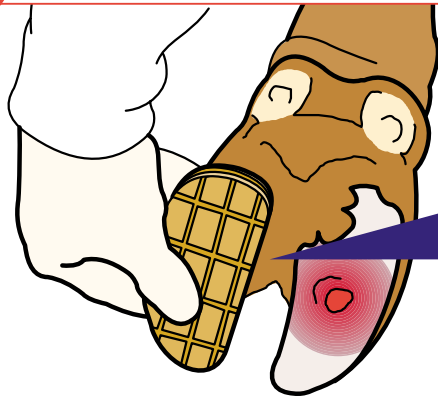
2

Apply warmed glue to warmed clog.

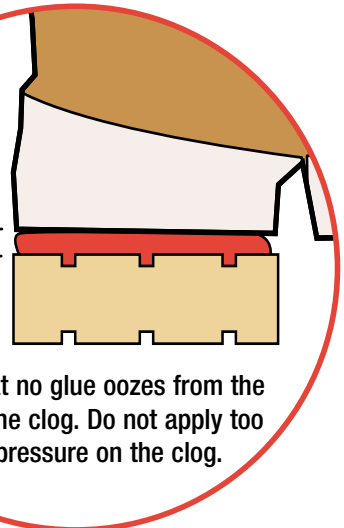


3

Immediately position the Cow Clog on the claw.



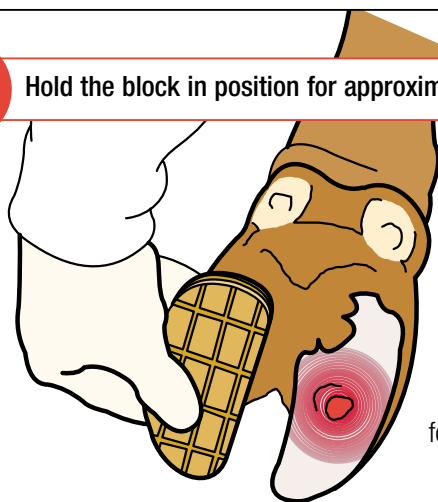
2 mm



**WARNING:** DO NOT MOVE THE BLOCK ONCE IN POSITION.

4

Hold the block in position for approximately 30 seconds.



Hold the block in position for approximately 30 seconds until firm (at this stage the glue is not fully set). Leave the cow's foot up for a further 2-3 minutes to ensure perfect adhesion before releasing the cow. Test for adhesion by trying to remove the clog by hand.

**Portek**  
LIMITED

Bleaze Farm • Old Hutton  
Kendal • Cumbria • LA8 0LU  
Tel: 01539 722628 • Fax: 01539 741282  
Email: info@portek.co.uk • www.portek.co.uk

# SUPER COWCLOG

# Instructions

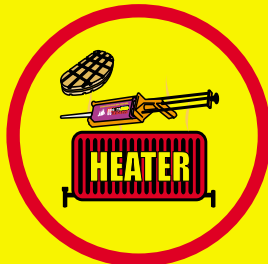
**3** Attach mixer tip onto the cartridge by pushing and turning to lock into position

**4** Replace cap after each use

## WARNINGS:



**NEVER** let the glue come into contact with water



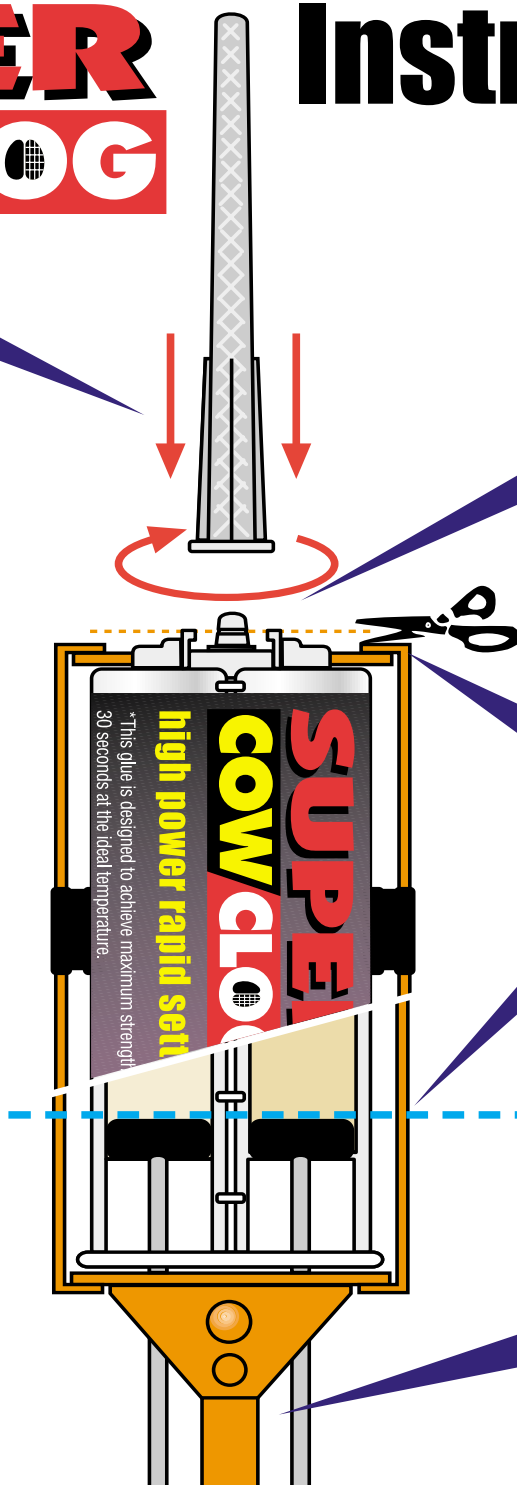
**WARM GLUE SETS FAST**



**ALWAYS KEEP NOZZLES CLEAN & CLEAR FROM OLD GLUE**



**THE GLUE MUST BE FIRM AND THICK TO SET**



**1** Cut off the seal

**WARNING:** DO NOT CUT BELOW THE GROOVE

**2** Plungers must be level

**WARNING:** CHECK BEFORE USE

The glue must flow equally from **both** cartridges to set. Before attaching a new mixer tip, squeeze a little of the glue out to clear any blockages and to level the plungers.

**5** To store after use

1. Take off the mixer tip
2. Clean the nozzle
3. Pull back plungers to release pressure
4. Replace cap as shown in **4** above

## WARM & DRY... the golden rule to achieve rapid glue setting

If the glue becomes too cold, it will take much longer to set and also becomes too thick to flow easily through the special mixer tip. If it is difficult to squeeze applicator handle, the glue is too cold. During winter months, warm both the glue and the wooden cow clogs before use. Many farmers and vets simply use an insulated box (ie coolbox) and place a hot water bottle under the glue and clogs if they are working in a cold cowshed or farmyard to make sure the glue sets in the shortest possible time.

Cold

Hot

GLUE SETTING GUIDE

Slow setting times

Fast setting times

